



# INTERNATIONAL STUDENT GUIDE

## NATIONAL SUN YAT-SEN UNIVERSITY

### Bachelor Degree Programs in English

Materials and Optoelectronic Science

Photonics

Biological Sciences

Computer Science and Engineering

Physics

Applied Mathematics

Marine Biotechnology and Resources

International Business Bachelor Program (IBBA)

Electrical Engineering

Mechanical and Electro-Mechanical Engineering

Chemistry



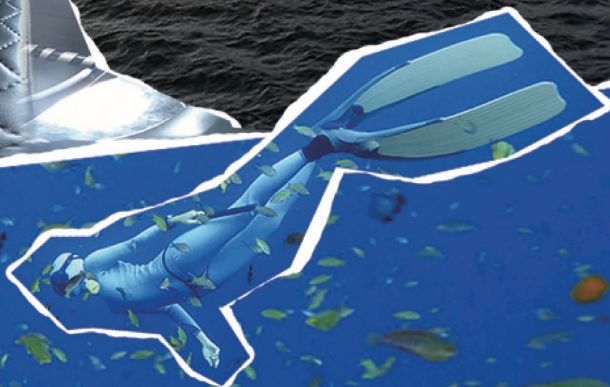
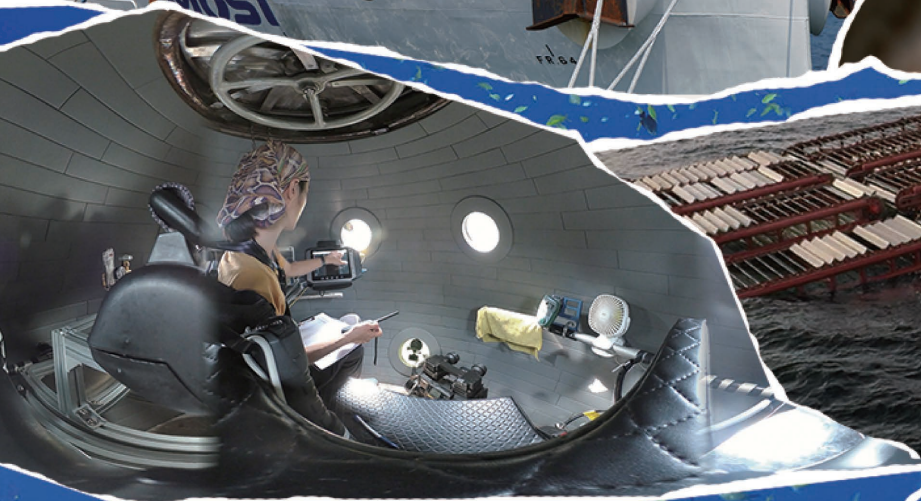
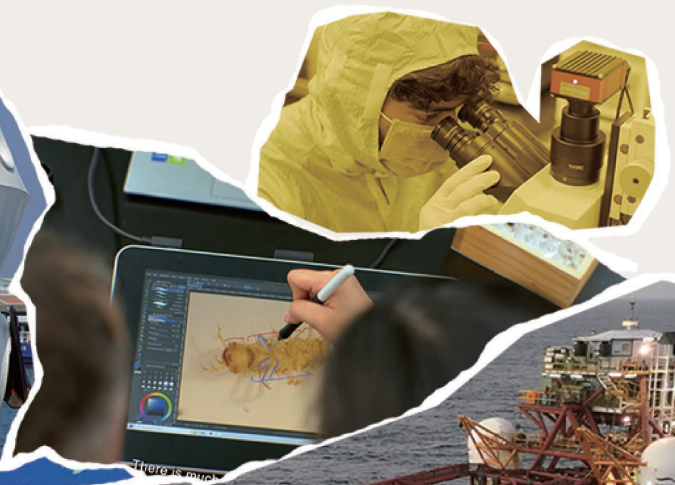
# ABOUT US

National Sun Yat-sen University was established in 1980 with a beachside campus at Sizih Bay, a well-known scenic spot in Kaohsiung, Taiwan.

NSYSU has been among the top universities in Taiwan to receive significant funding from the Ministry of Education for academic excellence. Outstanding academic achievements exhibited by the ten colleges have brought NSYSU among the world's top universities in numerous academic rankings.

## RESEARCH FOCUSES

- Aerosol Science
- Bionic Science
- Business Data Analysis
- Climate Change
- Crystal Growth
- Ocean Current Power Generation
- Smart E-commerce
- Underwater Manned and Unmanned Vehicles
- 5G and Cybersecurity





NSYSU RANKINGS

#4

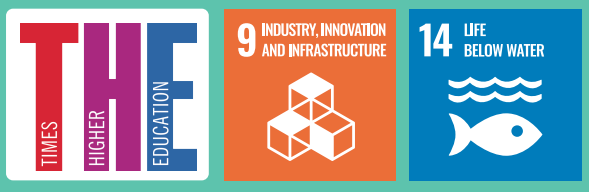
IN TAIWAN FOR RESEARCH CITATION PER FACULTY

17 SUBJECTS IN 2022

- Accounting and Finance 251-300
- Agriculture and Forestry 301-350
- Biological Sciences 501-550
- Business and Management Studies 201-250
- Chemistry 351-400
- Computer Science and Information Systems 301-350
- Economics and Econometrics 251-300
- Education and Training 201-250
- English Language and Literature 201-250
- Engineering - Chemical 301-350
- Engineering-Electrical and Electronic 251-300
- Engineering-Mechanical 301-350
- Engineering-Petroleum 51-100
- Material Sciences 251-300
- Mathematics 201-250
- Modern Languages 151-200
- Physics and Astronomy 351-400

#101-200

IMPACT RANKINGS 2022 FOR



INTERNATIONAL ACCREDITATIONS



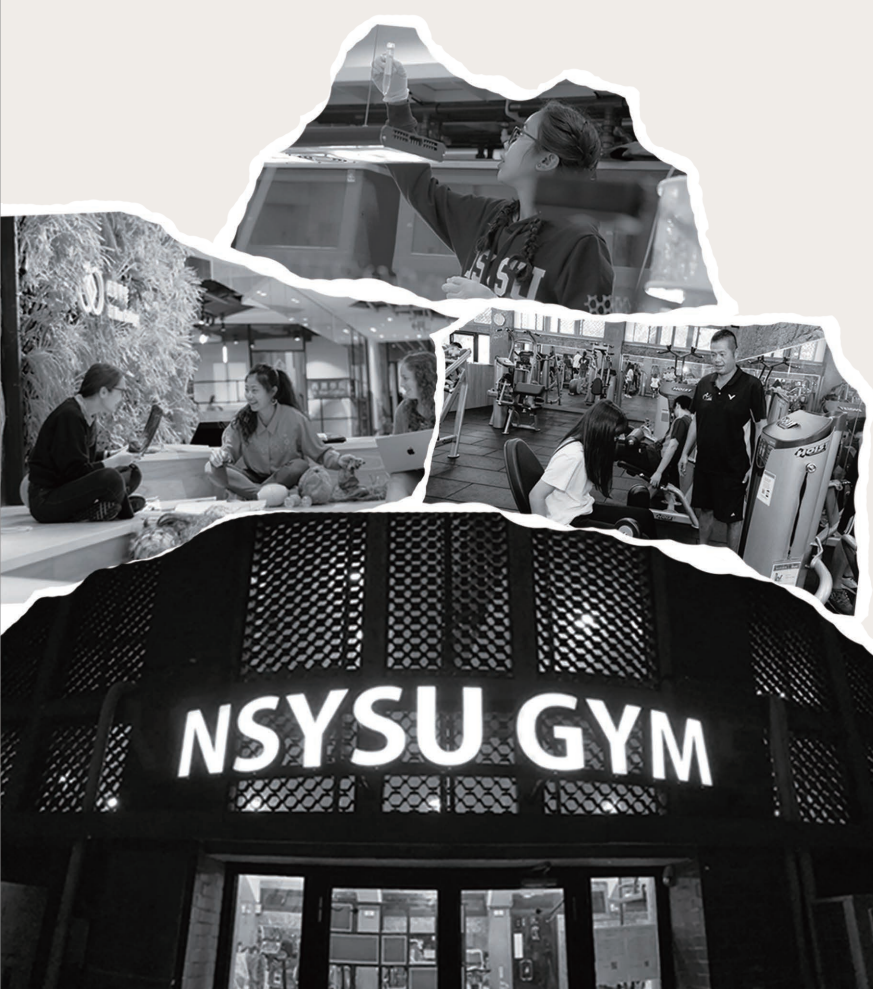
Level		Tuition Waiver	Dorm Fee Waiver	Stipend (per month)	Duration
Bachelor		N/A	N/A	NTD 6,000 ( USD 207)	Max. 4 yrs.
Master		●	N/A	N/A	Max. 2 yrs.
Doctoral	A	●	N/A	NTD 15,000 ( USD 519)	Max. 3 yrs.
	B	●	●		

Tuition: NTD 49,460 (USD 1,867.00) to NTD 63,560 (USD 2,399.40) per semester depending on the program enrolled.

Additional fees: NTD 7,956 (USD300.00) for health and medical insurance.

## WORK OPPORTUNITIES

International students graduating from Taiwanese universities are given priorities and an extended period of time to seek employment in Taiwan. A six-month visa extension after graduation can be granted, and another six months can be extended when in a job search or in the application process for work permit.



## ON-CAMPUS HOUSING

### International Dorm (Twin Room)

Fee per Semester  
NTD 17,000( USD 588)  
Shared living room, kitchen, and bathroom

### Local Dorm (Quadruple Room)

Fee per Semester  
NTD 8,500( USD 294)  
Shared bathroom and access to kitchen

AVERAGE LIVING COST per month  
NTD 10,000~12,000 ( USD 336.4 ~ 403.5)

\* USD is subject to change due to exchange rate

# APPLICATION TIMELINE **for Fall Semester Admission**

Online Application  
January 15 to March 15

Admission Notification  
by end of June

Semester  
September to January

# **for Spring Semester Admission**

Online Application  
August 1 to September 30

Admission Notification  
by end of December

Semester  
February to June



## GET IN TOUCH

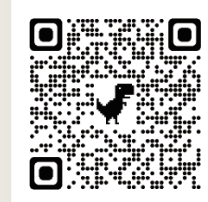
For admission application guide

including scholarship info.  
Office of International Affairs website:  
Prospective Students



For inquiries

contact the Division of Overseas and International Degree Student Affairs, OIA  
e-mail: [intadmission@mail.nsysu.edu.tw](mailto:intadmission@mail.nsysu.edu.tw)  
or the NSYSU OIA Chatbot OIA FB

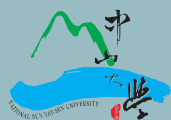
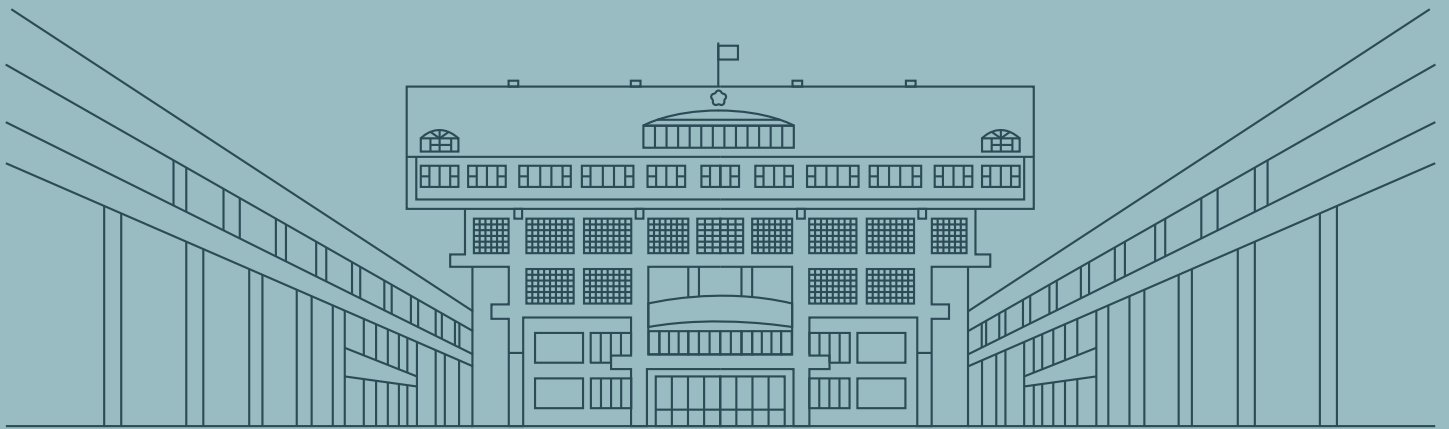


# ACADEMIC PROGRAMS for international students

● Fall Semester ● Spring Semester

	Bachelor	Master's	Ph.D.
<b>Liberal Arts</b>			
Department of Chinese Literature	●	●	●
Department of Foreign Languages and Literature	●	● ●	● ●
Department of Music	● ●		
Department of Theater Arts		● ●	
Graduate Institute of Arts Management and Entrepreneurship		● ●	
Institute of Philosophy		● ●	
<b>Medicine</b>			
Department of Post-Baccalaureate Medicine			
Institute of Biomedical Sciences		● ●	● ●
Institute of BioPharmaceutical Sciences		● ●	
Institute of Medical Science and Technology		● ●	● ●
Institute of Precision Medicine		● ●	
The Doctoral Program of Clinical and Experimental Medicine			● ●
<b>Science</b>			
Department of Applied Mathematics	● ●	● ●	● ●
Department of Biological Sciences		● ●	● ●
Department of Chemistry	●	● ●	● ●
Department of Physics	● ●	● ●	● ●
International PhD Program for Science			● ●
<b>Engineering</b>			
Department of Computer Science and Engineering	● ●	● ●	● ●
Department of Electrical Engineering	● ●	● ●	● ●
Department of Materials and Optoelectronic Science		● ●	● ●
Department of Mechanical and Electro-Mechanical Engineering	● ●	● ●	● ●
Department of Mechanical and Electro-Mechanical Engineering: Programs in Information Security		● ●	● ●
Department of Photonics		● ●	● ●
Institute of Communications Engineering			● ●
Institute of Environmental Engineering		● ●	● ●
International Master's Program in Electric Power Engineering		● ●	
International Master's Program in Telecommunication Engineering		● ●	

<b>Management</b>	Bachelor	Master's	Ph.D.
Department of Business Management	●	●	● ●
Department of Finance	●	●	● ●
Department of Information Management		●	●
Institute of Human Resource Management			● ●
Institute of Marketing Communication		● ●	
Institute of Public Affairs Management		●	●
International Business Bachelor Program (IBBA)	●		
Global Human Resource Management English MBA Program (GHRM MBA)		●	
Master of Business Administration Program in International Business (IBMBA)		●	
<b>Marine Sciences</b>			
Department of Marine Biotechnology and Resources	● ●	● ●	● ●
Department of Marine Environment and Engineering	● ●	● ●	● ●
Department of Oceanography	●	●	●
Graduate Institute of Marine Affairs (GIMA)		● ●	
Institute of Marine Ecology and Conservation		● ●	
Institute of Undersea Technology		● ●	
International Graduate Program of Marine Science and Technology			● ●
Doctoral Degree Program in Marine Biotechnology			● ●
<b>Social Sciences</b>			
Department of Political Economy	●		
Department of Sociology	● ●	● ●	
Institute of China and Asia-Pacific Studies		●	● ●
Institute of Economics		●	
Institute of Education		● ●	● ●
Institute of Political Science		● ●	● ●
International Graduate Program of Education and Human Development		● ●	● ●
International Master Program in Asia-Pacific Affairs (IMAPA)		● ●	
<b>Si Wan College</b>			
Program in Interdisciplinary Studies (PIS)	●		
Institute of Social Innovation		●	



國立中山大學  
National Sun Yat-sen University

國際事務處  
office of International Affairs

### National Sun Yat-sen University

Office of International Affairs  
Room #1006 & 2004, Administration Building  
No. 70, Lien-hai Rd., Kaohsiung 804201,  
Taiwan, R.O.C.

### Office Hour

Monday to Friday 9am to 5pm  
+886-7-525-2633/34 for partnership/exchange  
+886-7-5252632 for degree programs